

# Yashica 16

posted 9-20-03

This camera manual library is for reference and historical purposes, all rights reserved.

This page is copyright© by mike@butkus.org, M. Butkus, NJ.

This page may not be sold or distributed without the expressed permission of the producer

I have no connection with any camera company

On-line camera manual library

This is the full text and images from the manual. To print, try printing only 3 or 4 pages at a time.

If you find this manual useful, how about a donation of \$3 to: M. Butkus, 29 Lake Ave., High Bridge, NJ 08829-1701 and send your e-mail address so I can thank you. Most other places would charge you \$7.50 for a electronic copy or \$18.00 for a hard to read Xerox copy.

This will allow me to continue to buy new manuals and pay their shipping costs.

It'll make you feel better, won't it?

If you use Pay Pal, use the link below. Use the above address for a check, M.O. or cash.

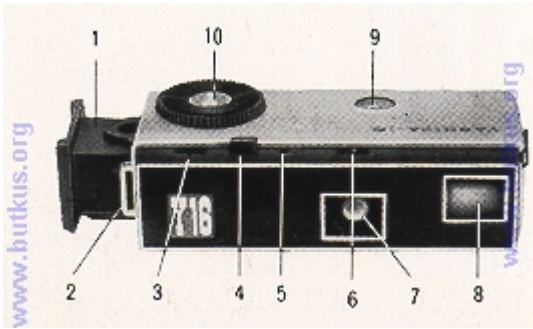


[Back to main camera manual page](#)

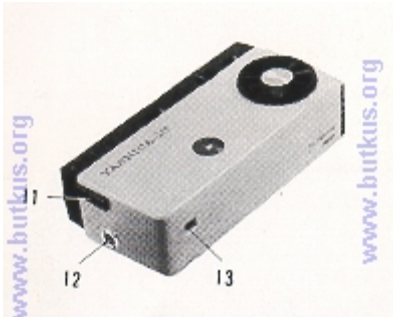


## Description of the CLIP-LOAD YASHICA Y16

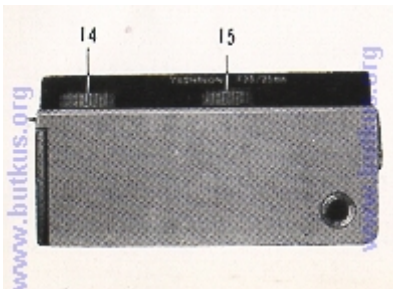
Read the following description carefully until you become fully familiar with all these working parts.



1. Film Magazine
2. Strap-holder
3. Shutter Speed Reading Window
4. Shutter Release Button
5. Cable Release Socket
6. Aperture Reading Window
7. Lens
8. Finder



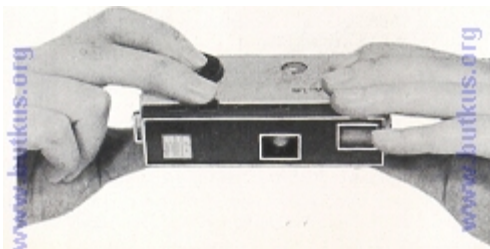
9. Film Exposure Counter
10. Film Advancing Disc
11. Slide-Lock for Magazine
12. Built-in Flash Terminal
13. Finder Eye Piece



14. Shutter Speed Control Ring
15. Aperture Control Ring
16. Tripod Socket

A precision instrument capable of bringing you some of the finest photographs you have ever taken. Please read the following pages carefully. Follow the easy, step-by-step recommendations.

## HOLDING THE CAMERA



The YASHICA Y16 is held between the forefinger and the thumb of the right hand, with the forefinger placed on the Film Advancing Disc and the thumb on the bottom of the camera. The camera is also held with the left hand in a similar manner as above. The Shutter Release Button is operated with the middle finger.

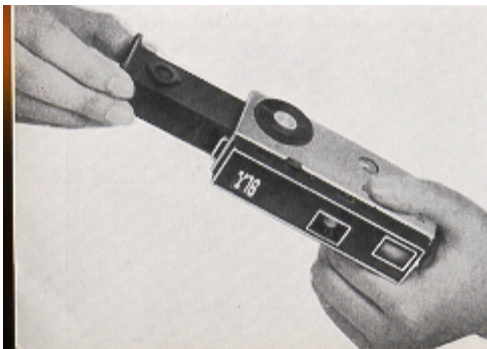
# LOADING THE CAMERA

16mm roll film

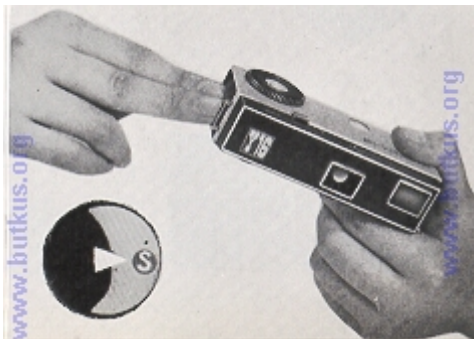
24 exposure per roll in the CLIP-LOAD MAGAZINE

10 X 14mm size negative

Black and White or Color



1. Insert a new CLIP-LOAD MAGAZINE (loaded with black and white or color film) into the YASHICA Y16.
2. Make sure the side with the cogwheel is on top.
3. Advance the film by turning the Film Advancing Disc counterclockwise until it stops. Press the Shutter Release Button.



4. Repeat twice the operation of advancing film with the Film Advancing Disc and pressing the Shutter Release Button. The Exposure Counter will indicate "S" (start) opposite the white triangle. Now advance the film again, and the Exposure Counter Dial will register figure 1, which indicates that the film is in position for the first exposure and the camera is ready to take the first picture.



The CLIP-LOAD MAGAZINE houses the film transport mechanism and 24 exposures of film. The magazine will take both the perforated and non-perforated type of 16mm film, available in black and white or color.

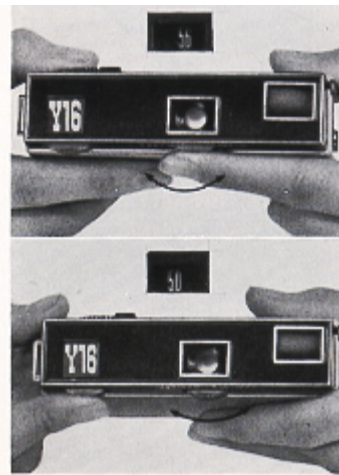
Using additional magazines and loading them with different types of film will enable you to take photographs under all conditions with the YASHICA Y16. —

Changing magazines is done in a matter of seconds: advance the last exposed frame of film by turning the Film Advancing Disc, push the Slide Lock forward and the magazine will pop out from the camera, then



insert the new magazine into the slot and you are ready to shoot.

## PICTURE TAKING PROCEDURE



1. Turn the Aperture Control Ring to the left or to the right until the desired number appears in the Aperture Reading Window.
2. Turn the Shutter Speed Control Ring and set the predetermined shutter speed. The shutter speed should appear in the Shutter Speed Reading Window.
3. Sight the subject through the viewfinder and when you have composed your picture gently press the Shutter Release Button.



The shutter speed controls the duration of the exposure. Shutter speeds on your YASHICA Y16 with its metal plane shutter are 1/25, 1/50, 1/100, 1/200 of a second and 'S'. The 'S' setting is for taking pictures with an exposure longer than one second. Use a tripod or brace when using the 'S'. It is advisable to set, before you advance the film and cock the shutter by turning the Film Advancing Disc....

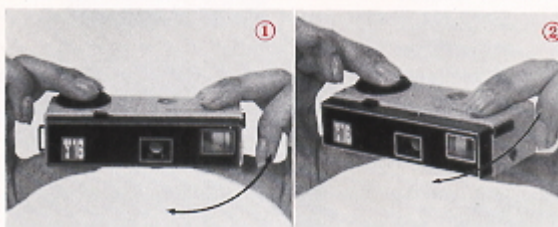
## VARIABLE SLOW SHUTTER SPEED AND TIME SETTING

When the Shutter Speed Dial is set at "S", the fine metal plane shutter of the YASHICA Y16 offers variable slow shutter speed and 'Time' setting, with its double tension action Shutter Release Button. If the Shutter Release Button is depressed to the bottom in one gentle continuous action, shutter speed will be about 1/10 of a second. Thus, variable slow shutter speeds are possible by the pressure application and time lag between the first and second tension on the button. For 'Time', the pressure on the button is removed after the shutter blades are open and then re-applied after the required exposure is made.



The Shutter Speed Reading Window, Aperture Reading Window, and Film Exposure Counter are conveniently arranged on top of the camera, permitting you at a glance to check for any possible errors in the settings before clicking the shutter.

## FILM WINDING



The Yashica Y16 incorporates an unique method of film winding. The film is wound by holding the camera between the forefinger and the thumb of the right hand, with the forefinger placed on the winding disc and the thumb on the bottom of the camera. The camera is then pushed forward with the left hand until it clicks.

Bringing the camera back to its original position, the shutter release will be approximately under the middle finger of the right hand, and you are ready to shoot in an instant. This operation transports the film, cocks the shutter, and sets the exposure counter all automatically. This action prevents double exposures....

## UNLOADING FILM

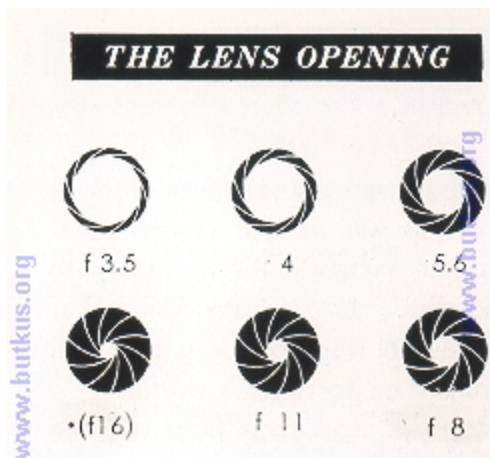
When the Exposure Counter indicates 24, IT IS THE LAST EXPOSURE.



Before removing the CLIP-LOAD MAGAZINE from the camera, advance the last exposed frame of film by turning the Film Advancing Disc and clicking the shutter. Repeat this operation once again. Then push the Slide Lock forward and the magazine will POP out.

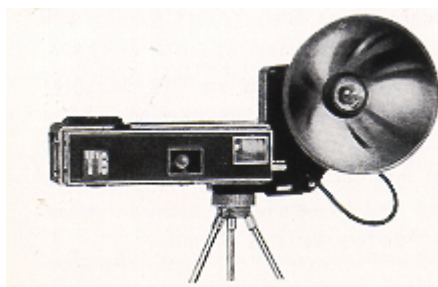
Immediately wrap with the original wrapper, the CLIP-LOAD MAGAZINE, without removing the exposed film from it, and replace it in the film carton. This will prevent any possible light leakage and damage to the film.

**Note:** When the Slide Lock is released, the Exposure Counter will reset automatically to "S", or start.



The lens aperture controls the amount of light that will pass- through the lens onto the light-sensitive film. YASHICA Y16, with its Yashinon lens, offers openings at f3.5, 4, 5.6, 8, 11 and ~16). Notice that the lower the number, the larger the opening. f3.5 is the largest opening, and ~16) the smallest. To set the lens opening, turn the Aperture Control Ring by setting the desired number in the Aperture Reading Window.

## TAKING FLASH PICTURES



Your YASHICA Y16 offers X synchronization

As you become more proficient at taking pictures, you will want to acquire accessories that increase the versatility of your camera. One of the first accessories you will want will be a flash unit. Synchronization for flash is built-in.

A standard FC connector plugs into the flash terminal. The YASHICA Y16 Flash Gun attaches to the camera with a bracket that screws into the tripod socket.

## SELF-TIMER



A Cable Release or a Self-Timer can be fitted to your YASHICA Y16. Screw the Cable Release into the Socket provided beside the Shutter Release Button. Your camera dealer will supply the proper Cable Release for your Y16.

## FILTERS

Initially, you will find a yellow filter ideal for bringing out clouds in landscape pictures and for general uses. An UV filter is suitable for color photography and also to protect the lens. As you become more advanced, you will want to use various filters, such as orange, green, etc.. for different effects. (Special type of slip-on filters are available for your YASHICA Y16.)

## Y16 ACCESSORIES & EQUIPMENT - for the YASHICA WAY of 16mm photography

**FILM:** (loaded in daylight CLIP-LOAD MAGAZINE)  
Y16 Black and White Film  
Y16 Color Film

**FOR PICTURE TAKING:**

Filter  
Flash Gun  
Table Tripod

**FOR FILM DEVELOPING:**

Developing Tank  
Transparent Negative Wallets

**FOR ENLARGING:**

Magnifier Printer  
Enlarger

**FOR PROJECTING:**

Slide Viewer  
Slide Projector

## EXPOSURE

Exposure means finding the right combination of lens-opening "aperture) and shutter speed in relation to the sensitivity (ASA) of your film. (ASA indicates American Standard Association. For example if you are using a film of ASA 100 (XX type) sensitivity, your correct exposure will be according to the following table

### DAYLIGHT EXPOSURE TABLE

Your speed will be 1/100 with aperture numbers shown below.

	Bright Sun	Hazy Sun	Cloudy-Bright	Cloudy-Dull or Open Shade (4)
Light Subject (1)	f/16	f/11	f/8	f/5.6
Average Subjects (2)	f/11	f/8	f/5.6	f/4
Dark Subject (3)	f/8	f/5.6	f/4	f/3.5

(1) Light Subjects: Distant landscapes, near-by people with sea, beach and snow scene. in the background.

(2) Average Subjects: Near-by people, houses, gardens, buildings and places not in the shade. Advisable to use this class when light and dark objects are in about equal proportions.

(3) Dark Subjects: People in cork clothing: trees, flowers, animals and large buildings,

(4) Open Shade: Subjects shaded from the sun but lighted by a wide area of open sky. The less the open sky the larger the lens opening.

If you are using an ASA 50 film, you will make a larger lens-opening or lower your shutter speed (1/50). When in doubt, follow the film manufacturer's recommendations, and you will be assured of good pictures.